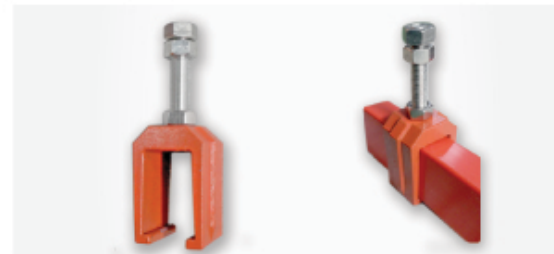
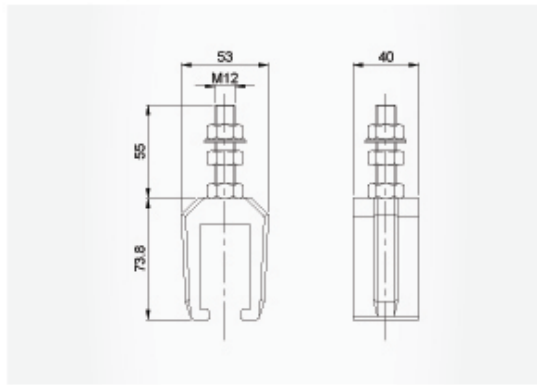


High Current Conductor Rail [HCL] - Part

Accessories

Sliding hanger

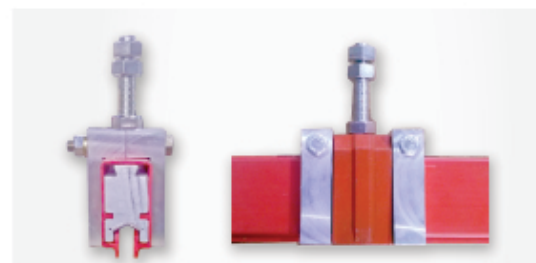
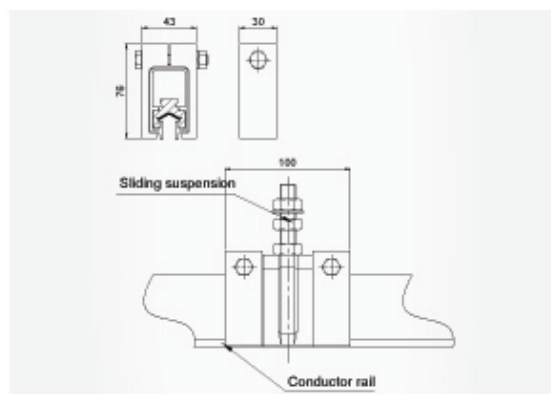
The sliding hanger is used for supporting the conductor rail.
Pitch distance: 1m ~ 2m



Bolt & Nut	M12
Order No.	HSB-0001

Fixed clamp

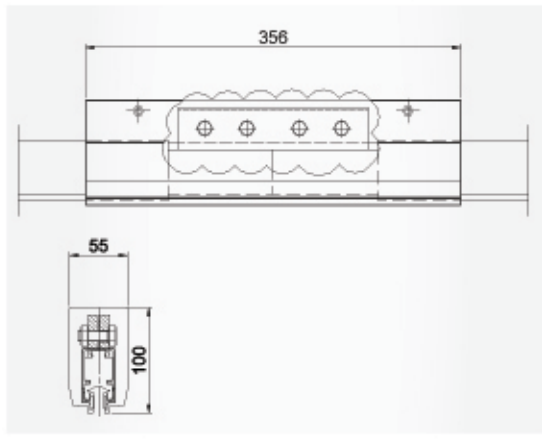
The fixed clamp should be installed near by the electric supply or the expansion unit in order to prevent shake and movement of the conductor rail.



Order No.	HFC-0001
-----------	----------

Jointing clamp

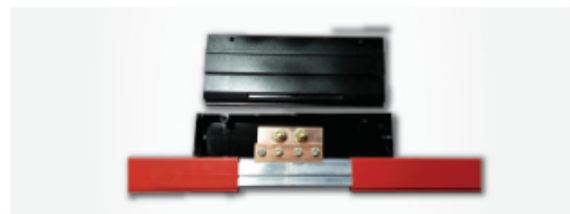
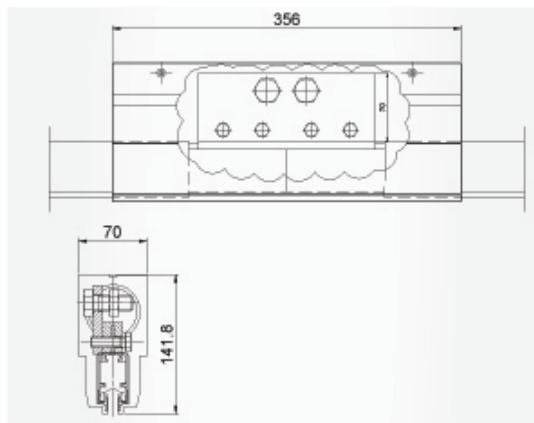
The jointing clamp is used for connecting the conductor-bar.
It is including Joint-cover and connector with bolt



Ampere	Order.No	Material
500~750A	HJC-7501	Aluminum
1000A	HJC-1001	Copper
1300A	HJC-1301	Copper
1600A	HJC-1601	Copper
2200A	HJC-2201	Copper

Feeding clamp

The feeding clamp is used for power supply and located at 1m long(standard)
from end of conductor-rail.



Ampere	Order.No	Material
500A~750A	HFC-7501	Aluminum
1000A	HFC-1001	Copper
1300A	HFC-1301	Copper
1600A	HFC-1601	Copper
2200A	HFC-2201	Copper

Bracket

The bracket should install by welding or bolting and also for Sliding hanger and Fixed clamp

Length	Order.No
400mm	HBR-4001
500mm	HBR-5001
600mm	HBR-6001

End cap

The end cap is used for end of the conductor-rail.

Order No.	HEC-0001

The current collectors can be selected depends on load-current of system.

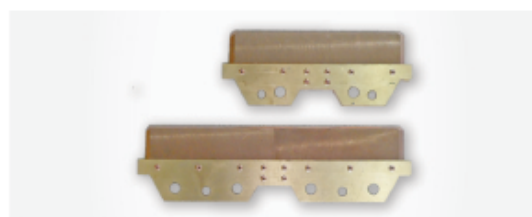
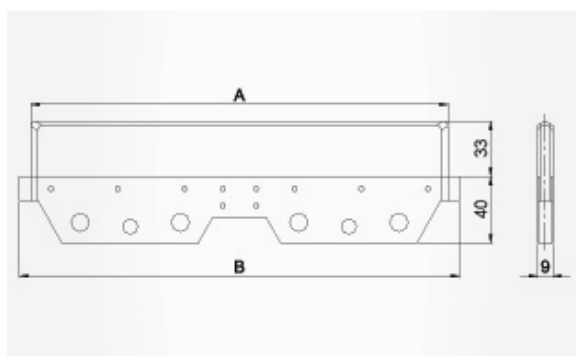
TYPE 1

Collector type	Ampere	Order No.	
Single	250A	PHASE	HCCS-25011
		EARTH	HCCS-25012
Double	500A	PHASE	HCCD-50011
		EARTH	HCCD-50012

TYPE 2

Collector type	Ampere	Order No.	
Single	500A	PHASE	HCCS-50011
		EARTH	HCCS-50012
Double	1000A	PHASE	HCCD-10011
		EARTH	HCCD-10012

Carbon brush

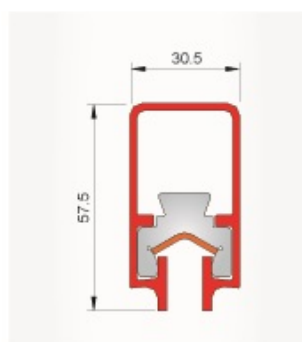


Ampere	A / B	Order.No
250A	170 / 184 (mm)	HCB-2501
500A	250 / 264 (mm)	HCB-5001

Insulated conductor rail

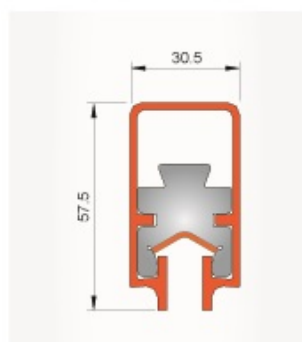
The standard length: 6,000mm(max.) the other length: on request

Conductor rail - 500A



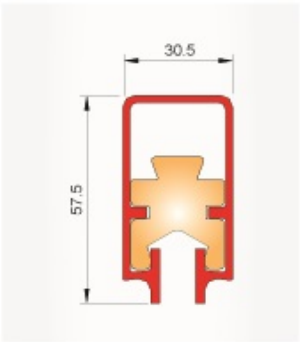
Conductor rail type		Alu-Cu	Alu-SST
Insulation cover		PVC	PVC
Standard length		6,000mm	6,000mm
Protection class		IP 23	IP 23
With 100mm phase distance	I max [35 °C]	500A	500A
	Z [Ω / km]	0.182	0.182
Cross section (mm²)	Alu	320	320
	Cu	25	-
	SST	-	30
Temperature range (ambient)	Min	-30 °C	-30 °C
	Max	+60 °C	+60 °C
Order No.	Phase	HCL-50011	HCL-50021
	Earth	HCL-50012	HCL-50022

Conductor rail - 750A



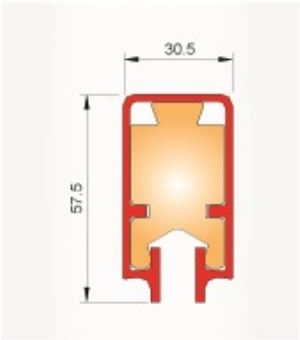
Conductor rail type		Alu-Cu	Alu-SST
Insulation cover		PVC	PVC
Standard length		6,000mm	6,000mm
Protection class		IP 23	IP 23
With 100mm phase distance	I max [35 °C]	750A	750A
	Z [Ω / km]	0.17	0.17
Cross section (mm²)	Alu	500	500
	Cu	25	-
	SST	-	30
Temperature range (ambient)	Min	-30 °C	-30 °C
	Max	+60 °C	+60 °C
Order No.	Phase	HCL-75011	HCL-75021
	Earth	HCL-75012	HCL-75022

Conductor rail - 1300A, 1600A.



Conductor rail type		Copper	Copper
Insulation cover		PVC	PVC
Standard length		6,000mm	6,000mm
Protection class		IP 23	IP 23
With 100mm phase distance	I max [35 °C]	1300A	1600A
	Z [Ω / km]	0.135	0.128
Cross section(mm²)	Cu	520	650
Temperature range (ambient)	Min	-30 °C	-30 °C
	Max	+60 °C	+60 °C
Order No.	Phase	HCL-13011	HCL-16011
	Earth	HCL-13012	HCL-16012

Conductor rail - 2200A



Conductor rail type		Copper
Insulation cover		PVC
Standard length		6,000mm
Protection class		IP 23
With 100mm phase distance	I max [35 °C]	2200A
	Z [Ω / km]	0.102
Cross section(mm²)	Cu	900
Temperature range (ambient)	Min	-30 °C
	Max	+60 °C
Order No.	Phase	HCL-22011
	Earth	HCL-22012